

Sussex VCSE Leaders Alliance

NEWSLETTER



Welcome to our latest update!

In this issue we share recent updates on the Sussex Health and Care structures and its funding. Keep reading to find out more and [sign up to the VCSE Intranet here](#) for VCSE updates, opportunities and more!



SIGN UP TO OUR
INTRANET TODAY

to find out more about the work our VCSE colleagues
are undertaking on behalf of the Sussex VCSE



[Sign up to the VCSE Intranet](#) for crucial VCSE updates, key contact information, learning and funding opportunities and resources.

Please note: it may take up to 48 hours for your membership to be approved. Please check your Junk folder for a confirmation email. The VCSE Intranet is hosted on the NHS intranet, so please don't be put off when you see an NHS sign up box! Once signed up, click on **Sussex Health and Care** in the menu bar and **VCSE** for lots of exciting content!

SVLA UPDATES

New SVLA chair

We're delighted to announce that [Dr Subo Shanmuganathan](#) has been appointed as Chair of the Sussex VCSE Leaders Alliance (SVLA), following an extensive selection process. Subo brings to the role a wealth of experience from across the NHS, VCSE, education and health and care sectors as well as excellent strategic and leadership skills. She is currently a Non-Executive Director for South East Coast Ambulance NHS Foundation Trust, Bromley Healthcare CIC, and the Crown Prosecution Service.

Subo said, 'I hope I can bring my experience in building and transforming organisations through partnership working to the SVLA and help it achieve its ambitions on behalf of the VCSE across Sussex. I'm delighted to be appointed the Independent Chair of the SVLA and I'm very much looking forward to working with you.'

Since her appointment, Subo has met VCSE representatives, organisations, networks and groups from across the three places in Sussex, as well as key NHS Sussex partnership managers. Subo said, 'We discussed commissioning and the recent NHS Sussex efficiencies review, and how the future commissioning arrangements might work. There was a focus on the continuing work to embed the VCSE sector as a strategic partner working with the ICS to tackle health inequalities and achieve good clinical outcomes.'

Subo is also planning to meet key leaders from the Sussex local authorities to gain a better understanding of how social care will be integrated into commissioning arrangements. Find out more by signing up to or visiting the [VCSE Intranet](#).

New SVLA structure

The Sussex VCSE Leaders Alliance is developing its structure. Subo, as Chair, will lead the development of a new leadership structure alongside the existing Sussex reps programme. Funding from NHS, Sussex has enabled the expansion of the SVLA to include a team of four VCSE Strategic Leads to develop the sector's role as a strategic partner in the emerging health and care structures across Sussex.

Three of the roles will be based in Brighton and Hove, East Sussex and West Sussex, hosted in place-based organisations, working closely with VCSE organisations, alliances, networks and statutory sector partners. The fourth role is a Sussex-wide Lead. They will work closely with each other to develop the sector's response to developing strategic commissioning approaches, that embed the principles of co-development, collaboration and partnership working.

Keep an eye out for emails and on [X](#) for further updates on timings, as well as information and contact details of the new Leads.

If you would like any more information in the meantime you can email us at sussexvcseleadersalliance.org.uk.

What is the Alliance?

The Sussex VCSE Leaders Alliance (SVLA) is an informal collaboration of leaders from the breadth of Sussex coming together to work on behalf of the wider voluntary, community and social enterprise sector (VCSE). It's made up of 20 plus senior CEOs from a range of health and care disciplines, as well as those working across the wider determinants of health, for example, homelessness, housing and advice services. Our ambition is to work strategically with health and care partners to improve health outcomes and health inequalities for the people who live in Sussex. The Alliance is funded through NHS Sussex. For more information about the Alliance visit the VCSE Intranet [here](#).

COMMISSIONING FRAMEWORK

The Sussex Commissioning Framework is in the process of endorsement by our statutory partners. Led by the SVLA, the Framework intends to support health and care system leaders, commissioners, providers, partners, the VCSE and communities across the Sussex Health and Care system to commission and support capacity building and resource management in the VCSE through collaboration and innovation.

The Framework represents a commitment between system partners to a new way of working together to improve population health outcomes through and with the VCSE, and to strengthen the VCSE's sustainability. It recognises and responds to the diversity and complexity of the statutory and VCSE sectors; the local context and policy and legal drivers through a set of principles and recommendations supported by enabling actions. It has been co-designed and coproduced through an extensive engagement programme and supports and aligns with place-based commissioning frameworks and programmes.

The Framework has been endorsed by the NHS Sussex Commissioning Group, East Sussex Health and Care Partnership Board and West Sussex Health and Care Partnership Board and will be taken to the Brighton and Hove Partnership Board for endorsement this month. It will accompany and align with the future Joint Commissioning Policy framework – a joint policy between NHS Sussex and the Local Authorities, to be developed over the coming months. Learn more [here](#).

NHS BRIEFING

The NHS Integrated Care Board meeting – March:

This meeting set out the key organisational and system developments planned to deliver the 'Improving Lives Together' strategy (ILT). Key elements of the plans include: the ICB moving towards becoming a Strategic Commissioner; the development of an Acute and Community Provider Collaboratives; place partnerships, the development of VCSE and Hospice Alliances as well as a new Committee in Common.

The NHS Integrated Care Board meeting – May:

The Chief Executives report to the Board included an update on SVLA development. Please see this report [here](#) (Item10.4). [Click here](#) to see recordings of all [previous board meetings](#).

Insight bank

The [Sussex Insight Bank](#) is a 'one-stop-shop' of local and national insights, information and data about our people and communities available to all partners, including the VCSE. You can register to access the Insight Bank and upload items to the site via the [NHS Sussex Intranet](#). For more info contact the Working with People and Communities Team, NHS Sussex at sxibc.involvement@nhs.net or on 0300 140 9854.

REPS ROUNDUP

SVLA has representatives on five NHS Sussex Integrated Care Board (ICB) Shared Delivery Boards and nearly 20 reps working on behalf of the sector across a range of health programme boards, steering groups and task and finish groups within the Sussex health and care system. Here are updates from each of the programme areas:

Children and Young people: [Adam Muirhead](#) a Charity Director for Trust for Developing Communities, has been appointed as the new Brighton and Hove VCSE rep on the NHS Sussex Children & Young People Health Oversight Board. Three networks are being set up in each of the places for VCSE leaders working with children and young people with the aim of enhancing collaboration and communication among provider groups and child and youth service (CYP) providers. Adam, [Hilary Bartle](#) in West Sussex and [Sally Polanski](#) in East Sussex will lead the groups in each place.

Inequalities Shared Delivery Board: VCSE Rep for this board, [Anusree Biswas Sasidharan](#), has helped to shape the NHS Sussex Improving Lives Together strategy, championing disabilities, as part of health inequalities, and ensuring that it is given a higher profile within the strategy. In the **Sussex Health and Care Assembly**, Anusree has raised a request for reports and data to be curated in a meaningful way. Another issue discussed was the need to ensure further discussion on IT platform, Plexus, and whether this was compatible with the VCSE.

Integrated Community Teams (ICTs) Shared Delivery Board:

[Jo Martindale](#), VCSE representative on this board reported: '16 ICT areas have been decided and data packs, containing health and care insights, have been created for each area. There is ongoing engagement testing across Sussex. Immediate tasks are to look at the area of frailty and then to carry out asset mapping in each area. There will be an ICT briefing soon.'

People and Development Shared Delivery Board:

Representative [Sue Livett](#) reported, 'The connections we are making are leading to some early discussions on how the VCSE workforce can benefit from closer working with health. Examples include activity in scoping an occupational health service for health and social care workers across our ICS area, and joining up on employee assistance programmes.' For the latest updates sign up to or visit the [VCSE Intranet](#).

Mental health, Learning Disabilities and Autism Shared Delivery Board:

As a VCSE representative on this board, [Neil Blanchard](#) has been helping to shape funding and service design. He has also helped to create the Sussex Compact with the Sussex Partnership NHS Foundation Trust. For more information see the interview with Neil below and on the [VCSE Intranet](#).

[Find your local rep, contribute to the agenda, get updates and learn more about the reps programme on the VCSE Intranet.](#)

Spotlight Interviews

Read the full stories on the VCSE Intranet

Anusree Biswas Sasidharan, Director of Bridging Change, and VCSE representative on the Inequalities Shared Delivery Board, NHS Race Inequalities Transformation Group and the Sussex Health and Care Assembly. [Read the full story here.](#)

'I am passionate about equality. At Bridging Change, we aim to create positive outcomes for Black, Asian and minoritised ethnic people, groups and organisations through the building of strong alliances, connections and networks.'

Much of role as a VCSE rep is about about advocating for the VCSE in this space and demonstrating the great value the VCSE brings to health and wellbeing. I have been able to shape the NHS Sussex Improving Lives Together Strategy, championing disabilities within health inequalities, ensuring that it is given a higher profile within the strategy. In the Assembly we have been speaking about the current use of empirical data, both quantitative and qualitative, from national, regional and local data sources.

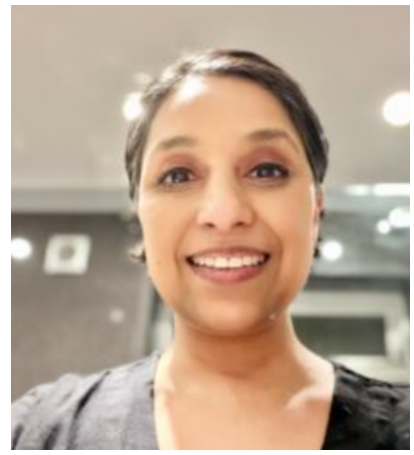
It is difficult speaking truth to power. I speak across different hierarchies, about issues and concerns in the sector that may prove to be a difficult conversation. It is a privilege to sit in these spaces - I enjoy being able to contribute to discussions on behalf of the sector. A seat at the table is the start of this journey.'

Neil Blanchard, Chief Executive of Southdown, chair of the Sussex VCSE Mental Health Leadership Group and VCSE representative on the Mental Health, Learning Disabilities and Autism Shared delivery Board Shared, spoke to us about collaborative working to shape mental health support. [Read the full story here.](#)

'[Southdown](#) is a Sussex-based not-for-profit provider of mental health, homeless prevention and learning disability support, care and housing, supporting around 11,000 clients and tenants a year in Sussex.'

One of the main challenges for mental health services in Sussex is that the demand for support clearly outstrips the support available. The challenge is looking at how both the voluntary and statutory sectors can meet that demand together.

I think we have a duty as sector leaders to make a difference in our communities. The scale of the issue will take different ways of working and we want to be part of the solution and to lead and shape that solution.'



UOK

Southdown recently launched UOK East Sussex, a pioneering five-year partnership with East Sussex County Council, which will deliver a phased plan to improve access to integrated support. For more information [visit the Brighton and Hove UOK website](#) and see the interview with Neil Blanchard, Southdown's Chief Executive, above and on the [VCSE Intranet](#).

ACRONYM BUSTER

ICS Integrated Care System. The [Sussex ICS](#), or Sussex Health and Care Integrated Care System, is a partnership of NHS organisations, local authorities, the VCSE and others who work together to plan services, improve health and reduce inequalities. It is known in Sussex as the Sussex Health and Care Integrated Care System

The Alliance Strategic Team is Changing!

[Jayne Ross](#), VCSE Strategic Lead and [Kate Durrant](#), Senior Communications Officer are moving on to pastures new but we are delighted to say that a new and bigger team is on its way to build on the work developed to date. For more details see the SVLA updates article above. We have so enjoyed working with all our system partners and hope that our contribution has built the foundations for future collaborations that will have a positive and profound impact for our communities, and the people our sector and our stakeholders work with every day. The SVLA is funded by NHS Sussex.

CONTACT US

 sussexvcsealliance@communityworks.org.uk

 @VCSESussex